

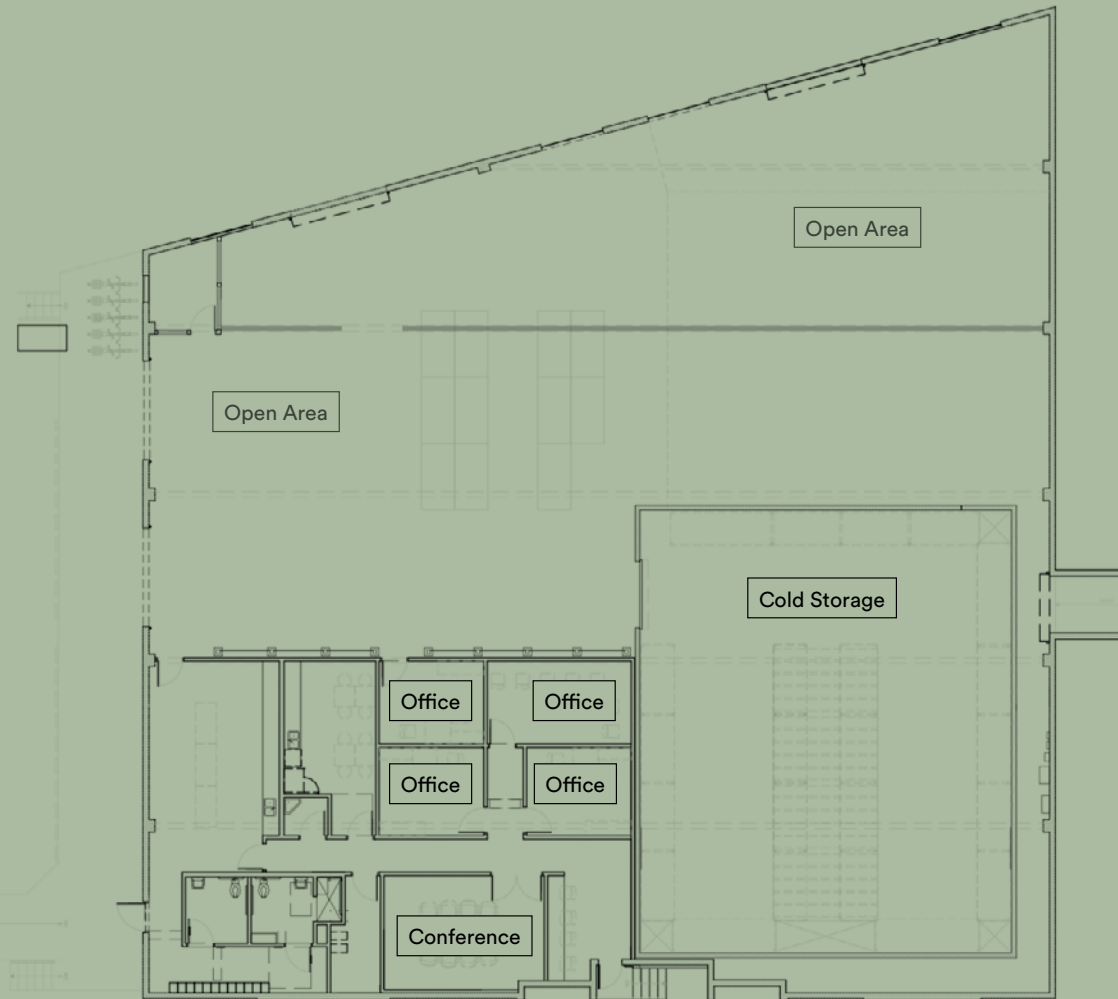
Creative Space®

123 S Myers St
Boyle Heights Industrial Flats

±11,400 RSF / ±14' High Ceilings

For Sublease





Type: Warehouse / Flex / Office
RSF: ±11,400 SF
Rate/SF/NNN/MO: \$1.15
Occupancy: Available Now

Features of 123 S Myers St

- On-site, fenced parking.
- High ceilings.
- Existing mix of private offices and conference room with cold storage and open areas.
- Flexible terms—1 to 10 years





You Are Here
at 123 S Myers St

